



6500 KAISER DRIVE, FREMONT, CA 94555

OUR MARKETS • OUR PROPERTIES • OUR TEAM • OUR MODEL

Kaiser Drive is a two-story industrial R&D building located in Fremont's prestigious Ardenwood Technology Park. This building has been designed to accommodate life science or office users.



BIOMED REALTY TRUST, INC.
Real Estate for the Life Science Industry®



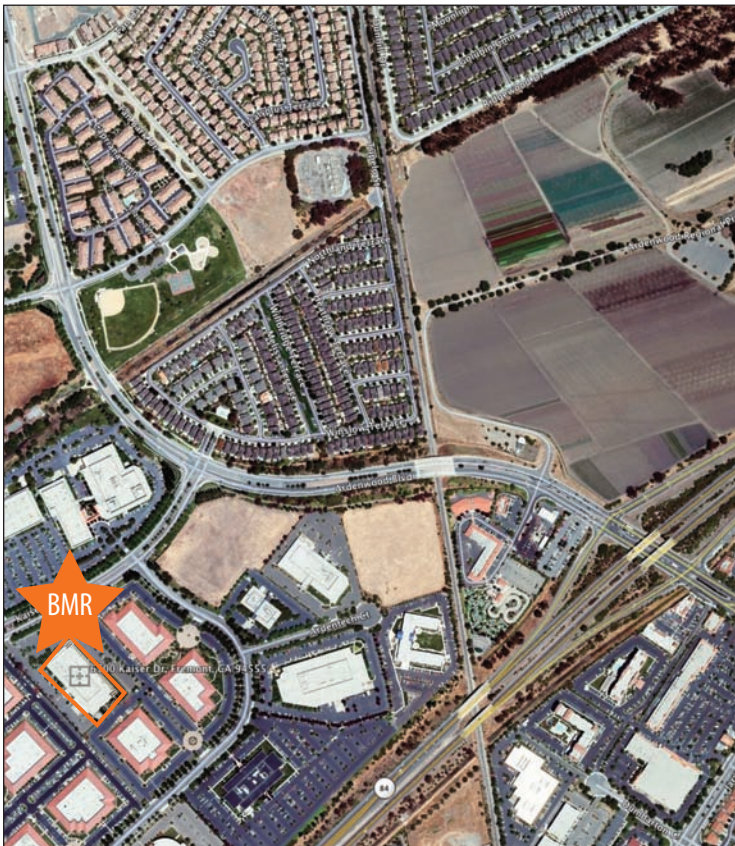
BIO MED REALTY TRUST, INC.

Real Estate for the Life Science Industry®



Property Information

Kaiser Drive is a two-story industrial R&D building located in the Ardenwood Technology Park in Fremont, California, with easy access to Highway 84, I-880 and the Dumbarton Bridge. It is only 10-15 minutes from Palo Alto and Stanford University to the west and 20-30 minutes from U.C. Berkeley and the Oakland airport to the north. The property was built in 1990 and was currently renovated for biotech laboratory and office use. For information on spaces for lease at Kaiser Drive, please contact us.



Features

- Rentable square feet: 87,953
- Flexible 2-story concrete tilt-up construction with attractive architectural features
- Imposing curbside identity with ample parking and setbacks, fully landscaped on 4.63 acres in a quality corporate environment.
- Year built: 1990

Amenities

- Easy access to Highway 84, I-880 and the Dumbarton Bridge
- 10-15 minutes from Palo Alto and Stanford University
- 20-30 minutes from U.C. Berkeley and the Oakland airport
- Functional layout
- Close to amenities, including W Hotel