

EISENHOWER ROAD

WWW.BIOMEDREALTY.COM



2600 EISENHOWER ROAD, TROOPER, PA 19403

OUR MARKETS • OUR PROPERTIES • OUR TEAM • OUR MODEL

This facility is an ideal location for a company looking for a convenient location and flexible space options, as well as access to the Route 202 Corridor.



BIO MED REALTY TRUST, INC.
Real Estate for the Life Science Industry®



BIO MED REALTY TRUST, INC.

Real Estate for the Life Science Industry®

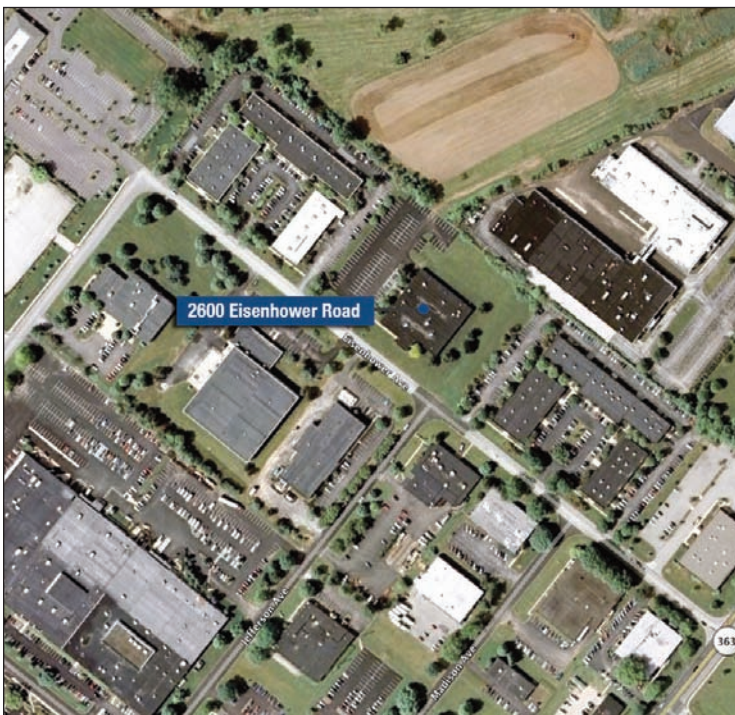


Property Information

This one-story mixed use/office building is located near Philadelphia with convenient access to the Route 202 Corridor. The property was built in 1973 and significantly renovated in 2010. Available space includes newly built out move-in-ready office space featuring new HVAC units, ADA bathrooms, and finishes.

Features

- Number of Buildings: 1
- Rentable Square Feet: 27,750
- Year Built/Renovated: 1973/2010
- Tenants: The Lincoln Center



Amenities

- Flex Building situated on 3.66 acres
- 11,185 SF Available, Will Divide
- Parking Ratio: 4.1 / 1,000 SF
- Experienced Ownership and Management
- Significantly Renovated in 2010
- 400' Frontage
- New HVAC, Bathrooms, and office space