

3500 PARAMOUNT PARKWAY

WWW.BIOMEDREALTY.COM



3500 PARAMOUNT PARKWAY, MORRISVILLE, NC 27560

OUR MARKETS • OUR PROPERTIES • OUR TEAM • OUR MODEL

3500 Paramount Parkway is a two level, 61,000 SF lab building that's 100% leased to Bayer CropScience in the North Carolina Research Triangle region.



BIOMED REALTY TRUST, INC.
Real Estate for the Life Science Industry®

3500 PARAMOUNT PARKWAY

3500 PARAMOUNT PKWY,
MORRISVILLE, NC 27560
WWW.BIOMEDREALTY.COM



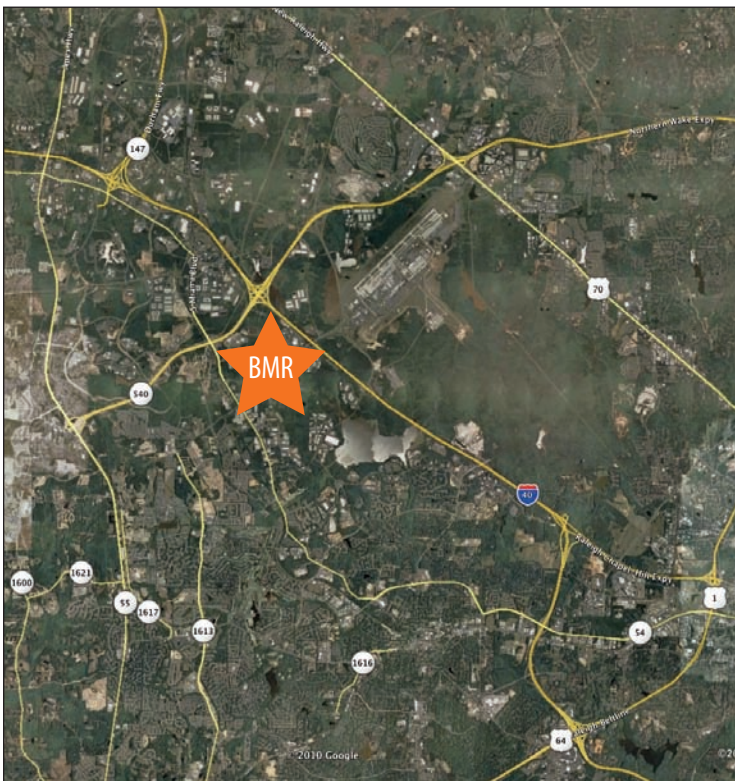
BIO MED REALTY TRUST, INC.
Real Estate for the Life Science Industry®



Property Information

The region surrounding the Research Triangle Park is often referred to simply as "The Triangle." The term rose to popular use in the 1950's with the creation of the world's largest research park. However, it also refers to the three research universities of Duke, North Carolina State, and the University of North Carolina at Chapel Hill. The Triangle further designates the three anchoring cities of Raleigh, Durham, and Chapel Hill where the campuses are located. Nestled in the Piedmont area of North Carolina, this multi-county region is home to some of the nation's leading research institutes and high-tech businesses.

3500 Paramount Parkway is set in a park-like environment called Perimeter Park that is a 2.5 million square-foot, master-planned office and industrial development with more than 2 million square feet of future planned development.



Features

- Number of Buildings: 1
- Rentable Square Feet: 61,603 SF
- Year Built: 1999
- Tenant: Bayer CropScience

Amenities

- Set in a park-like environment, there are numerous amenities within a 3-mile radius, including nearby restaurants, hotels, daycare facilities, financial services and shopping.
- Within three minutes of the Raleigh-Durham International Airport, Research Triangle Park and I-40.

BioMed Realty Trust, Inc. | NYSE: BMR
17190 Bernardo Center Drive | San Diego, CA 92128
www.biomedrealty.com
(8 5 8) 4 8 5 . 9 8 4 0