

11388 SORRENTO VALLEY ROAD

WWW.BIOMEDREALTY.COM



11388 SORRENTO VALLEY ROAD, SAN DIEGO, CA 92121

OUR MARKETS • OUR PROPERTIES • OUR TEAM • OUR MODEL

Located in the heart of the Sorrento Valley life science submarket, 11388 Sorrento Valley Road is a two-story laboratory building with executive office space totaling 35,940 SF.



BIOMED REALTY TRUST, INC.
Real Estate for the Life Science Industry®



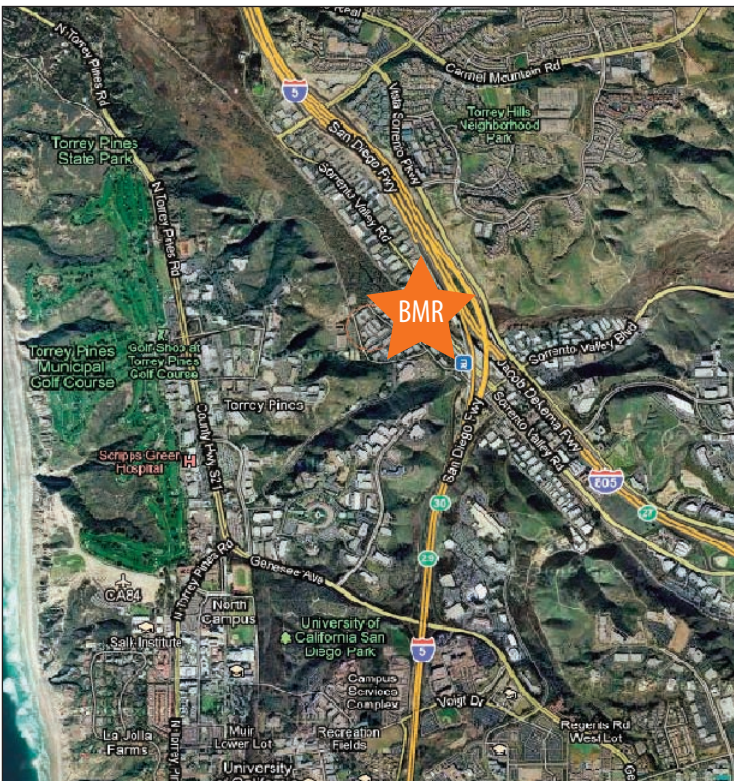
BIO MED REALTY TRUST, INC.

Real Estate for the Life Science Industry®



Property Information

Located in the heart of the Sorrento Valley life science submarket, 11388 Sorrento Valley Road is a two-story laboratory building with executive office space totaling 35,940 sf. The Property is 100% leased to tenants including Halozyme, Siemens Medical Solutions and UCSD. This building is situated on the west side of Sorrento Valley Road just west of Interstate 5 and northwest of the I-5 and I-805 merge. The project is ideally located just two blocks from the Sorrento Valley Coaster Station, and minutes from the Torrey Pines submarket, The Scripps Research Institute, Salk Institute for Biological Sciences, San Diego International Airport and UCSD. For more information on space at 11388 Sorrento Valley Road, please contact us.



Features

- Number of Buildings: 1
- Rentable Square Feet: 35,940
- Year Built: 2000
- Primary Tenants: Halozyme Therapeutics, UCSD
- 3.42 : 1,000 parking
- Chem/Bio Lab & Office

Amenities

- Deli adjacent
- 2 blocks from Coaster Station (walking distance)
- Proximity to major freeways 5 & 805
- Central San Diego Location: 15 minute drive to most locations
- Convenient access to numerous restaurants, hotel accommodations, coastal residential communities and freeways